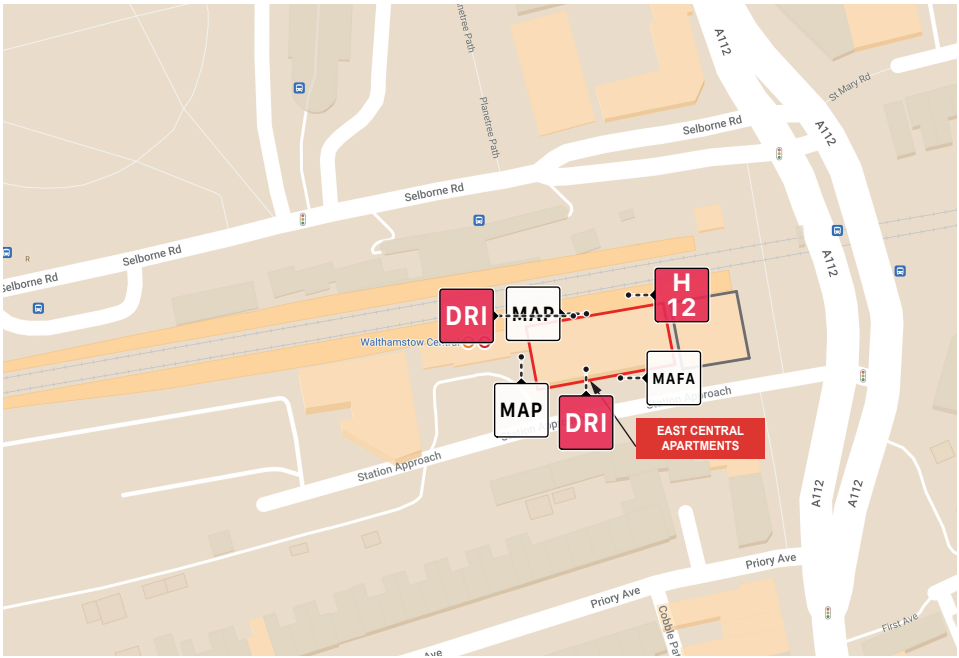


# Single Page Building Plan

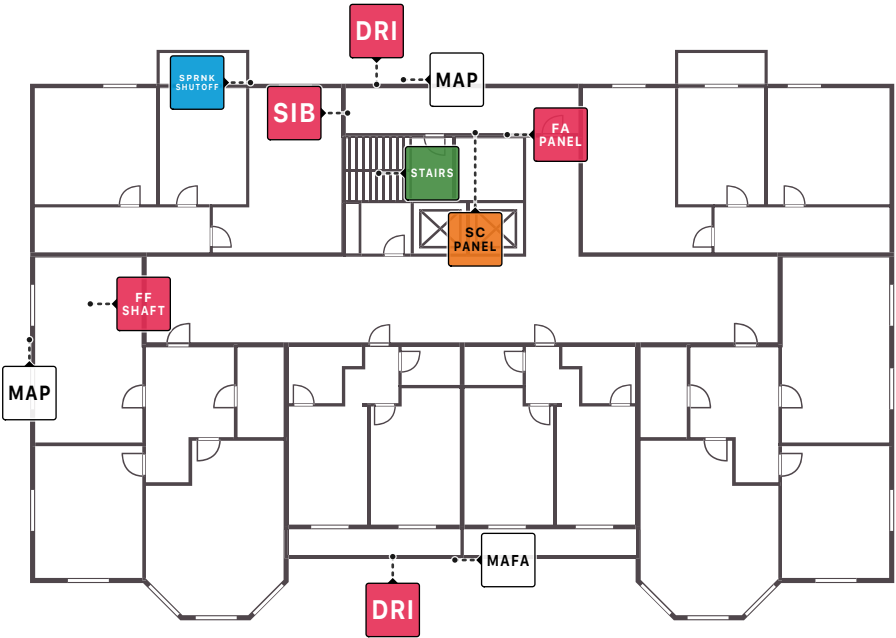
The Blade Building, 5 Silk Street, Oldham, Manchester, Lancashire, M1 7HN

Updated 26 April 2024

- MAFA** Main Access for Fire Appliances
- MAP** Main Entrance / Access Point
- SIB** Secure Information Box
- FF SHAFT** Fire Fighting Shaft
- DRI** Dry Riser Inlet
- STAIRS** Stairwell
- SPRNK SHUTOFF** Suppression Sprinkler System Shut-Off
- FA PANEL** Fire Alarm Control Panel
- SC PANEL** Smoke Control Control Panel



- Building Use** Apartment Block
- Building Height** 23m
- Building Footprint (m2)** 1500
- External Dimensions** 30m x 50m
- Number of Flats** 24
- Storeys Above Ground** 11
- Number of Basement Levels** 1
- Number of Stairwells** 1
- Flat Type** Single Storey, Maisonette, and Scissor Section Flat

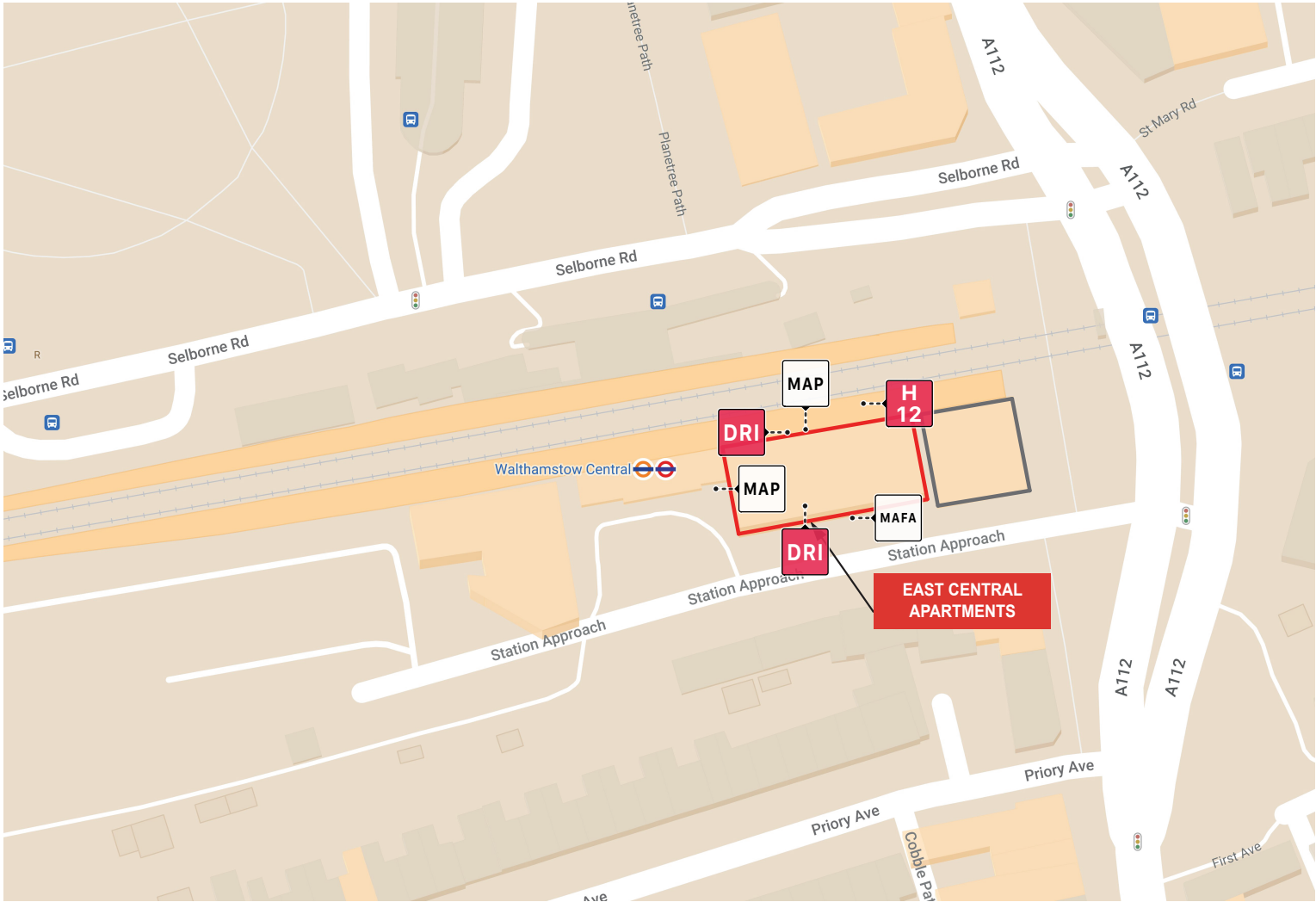


# Environs

**The Blade Building**, 5 Silk Street, Oldham,  
Manchester, Lancashire, M1 7HN

Updated 26 April 2024

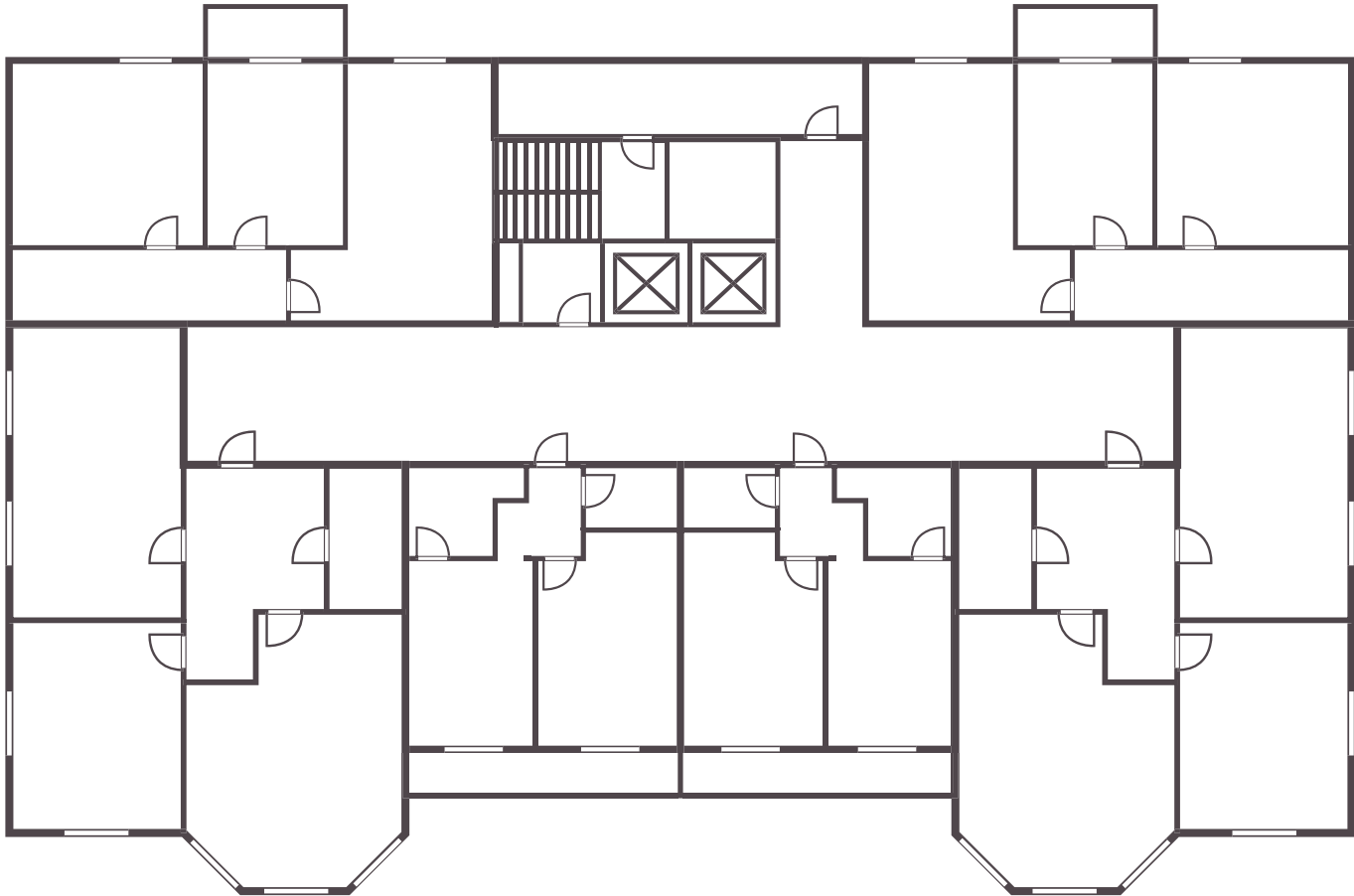
- MAFA** Main Access for Fire Appliances
- MAP** Main Entrance / Access Point
- H** Hydrant and Distance in Meters
- DRI** Dry Riser Inlet



# Basement

**The Blade Building**, 5 Silk Street, Oldham,  
Manchester, Lancashire, M1 7HN

Updated 26 April 2024

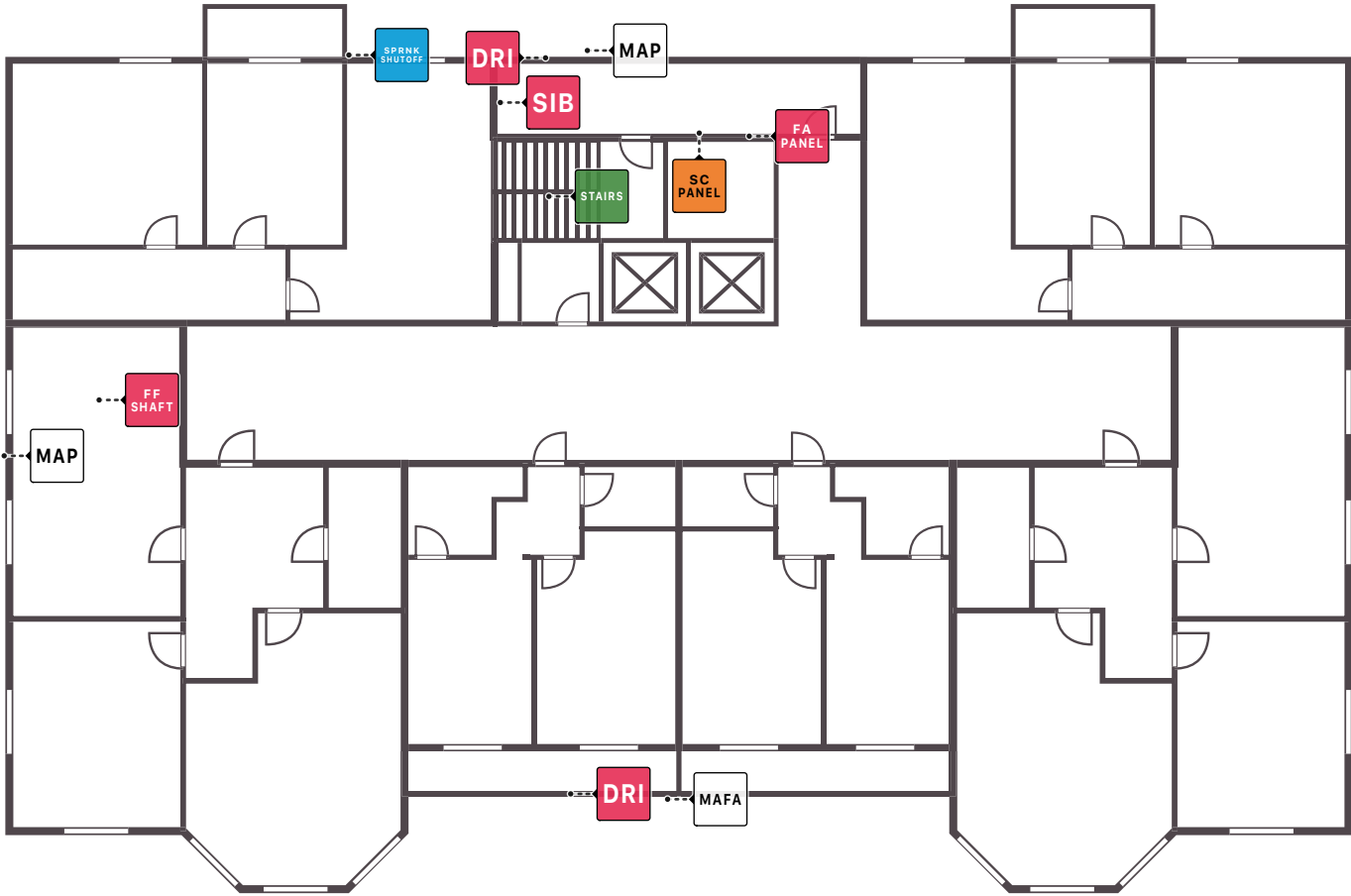


# Ground Floor

**The Blade Building**, 5 Silk Street, Oldham,  
Manchester, Lancashire, M1 7HN

Updated 26 April 2024

- MAFA** Main Access for Fire Appliances
- MAP** Main Entrance / Access Point
- SIB** Secure Information Box
- FF SHAFT** Fire Fighting Shaft
- DRI** Dry Riser Inlet
- STAIRS** Stairwell
- SPRINK SHUTOFF** Suppression Sprinkler System Shut-Off
- FA PANEL** Fire Alarm Control Panel
- SC PANEL** Smoke Control Control Panel

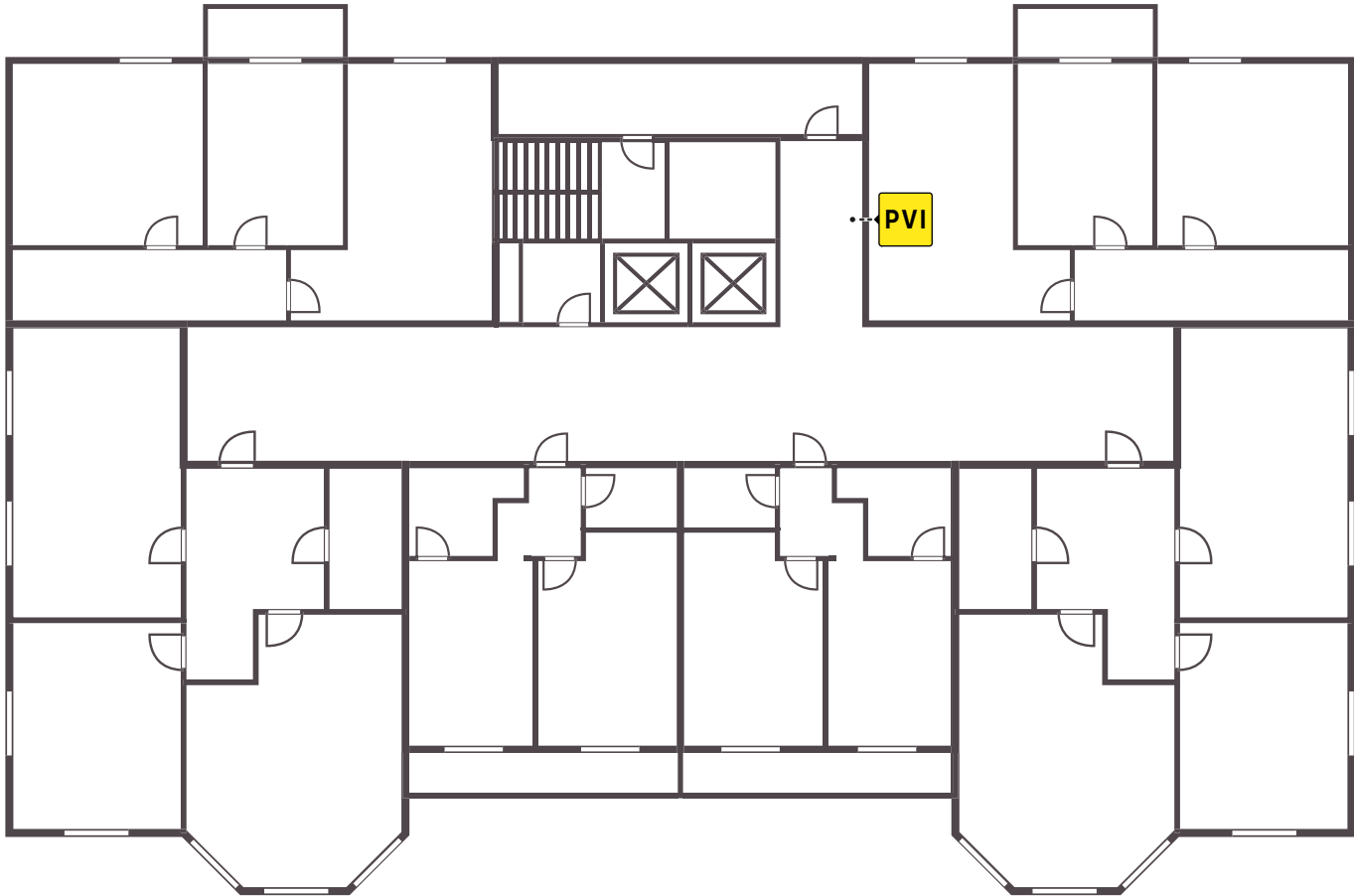


# First Floor

The Blade Building, 5 Silk Street, Oldham,  
Manchester, Lancashire, M1 7HN

Updated 26 April 2024

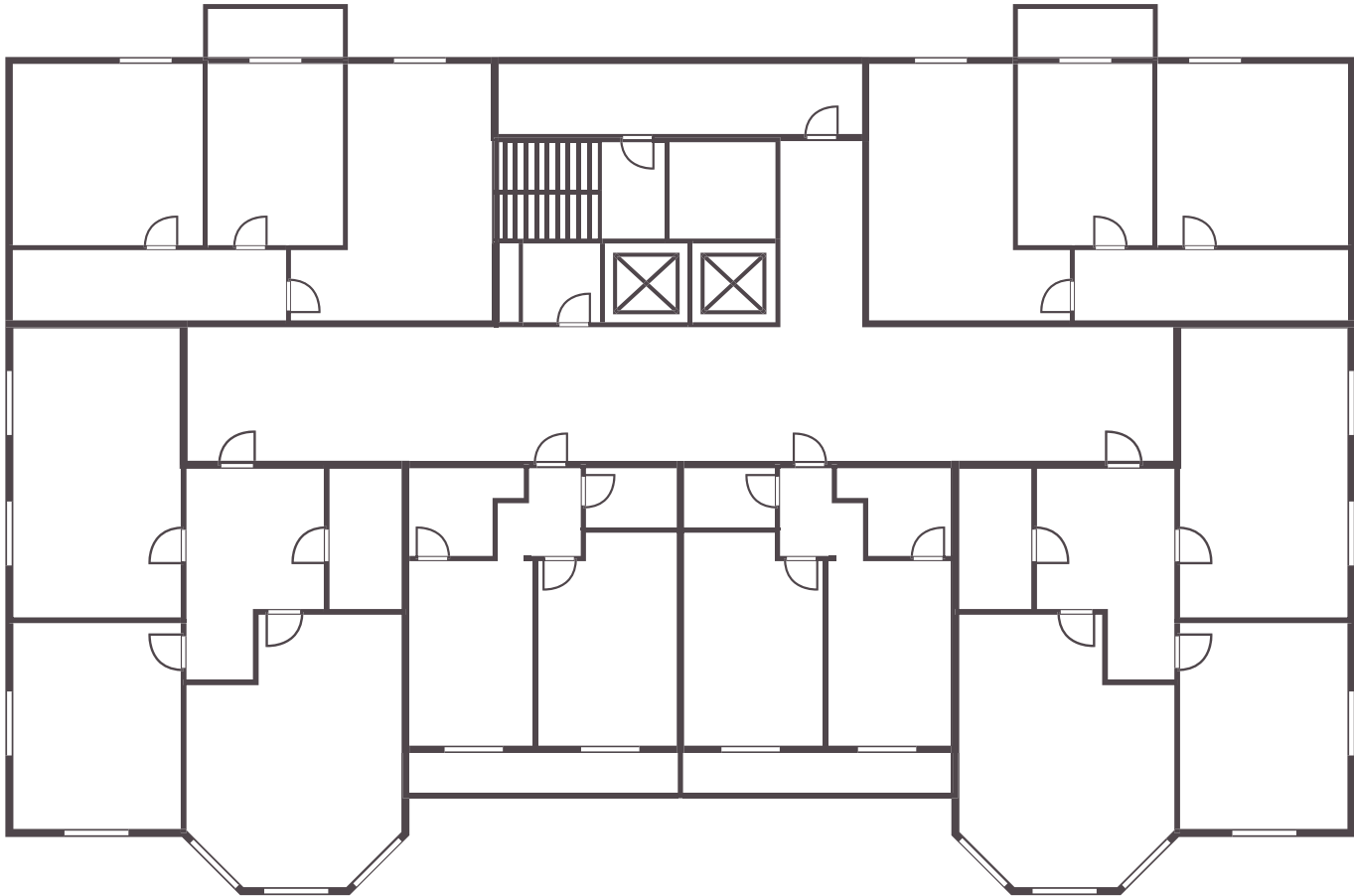
**PVI** Photovoltaic System Isolator



# Second Floor

The Blade Building, 5 Silk Street, Oldham,  
Manchester, Lancashire, M1 7HN

Updated 26 April 2024



# Third Floor

The Blade Building, 5 Silk Street, Oldham,  
Manchester, Lancashire, M1 7HN

Updated 26 April 2024

**RAP** Roof Access Point

